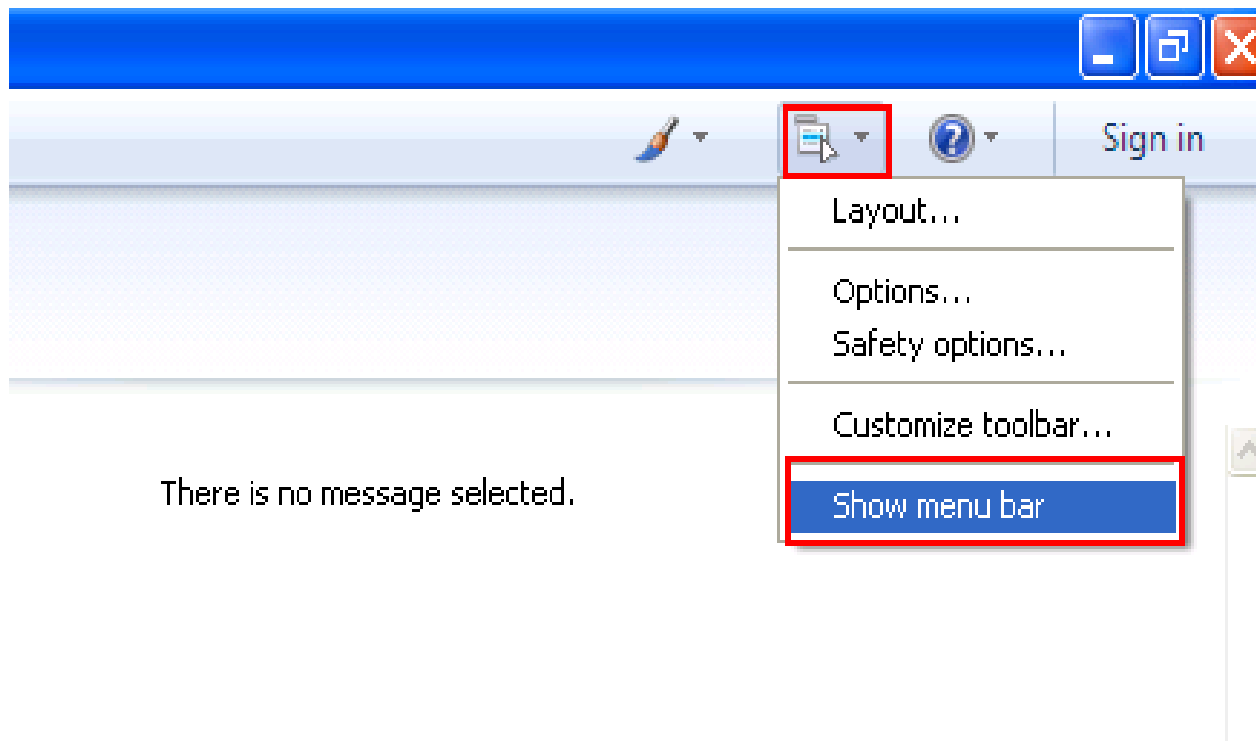


How to set up your IMAP/POP e-mail address with Windows Live Mail 2009

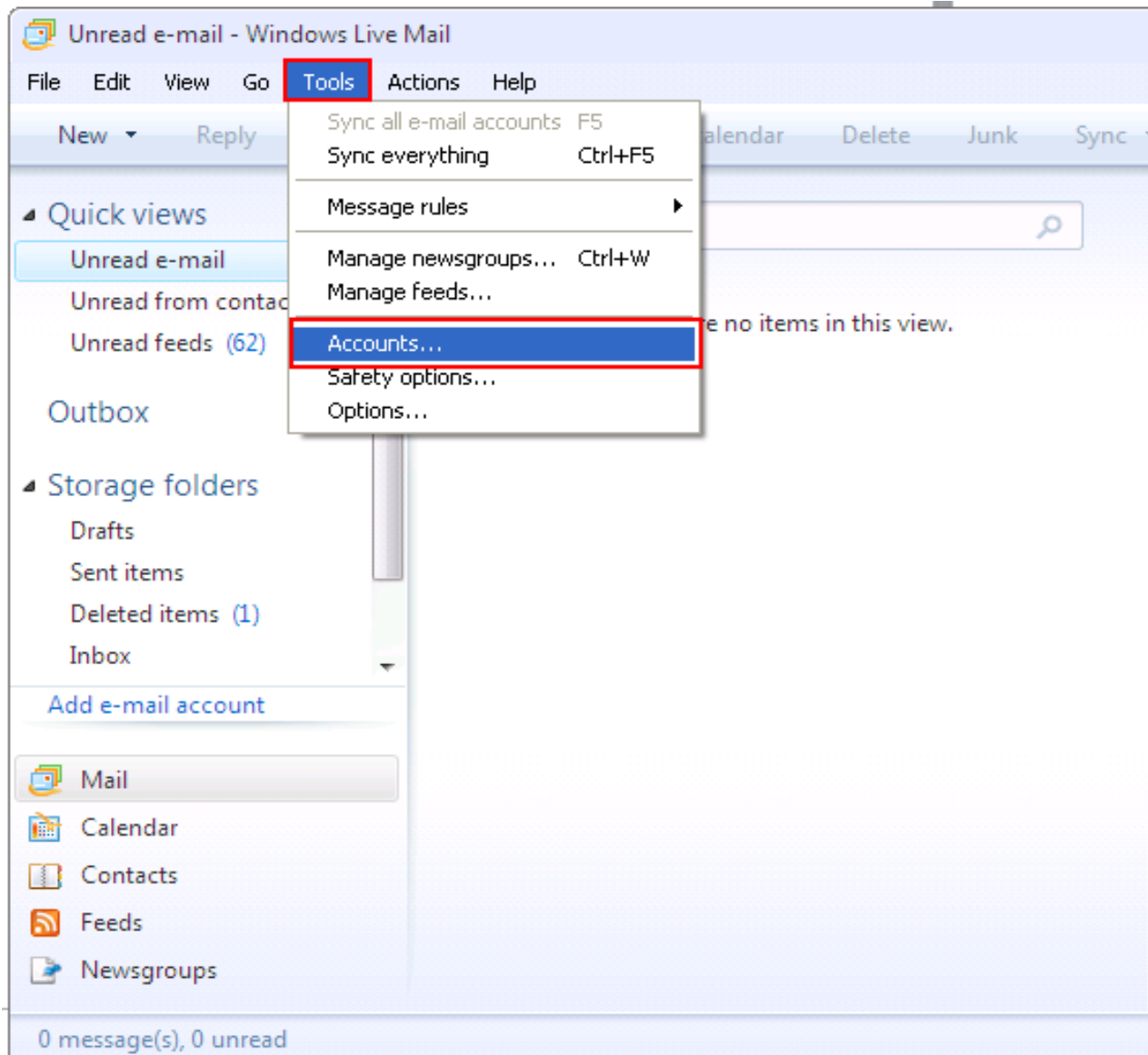
The following instructions will configure Windows Live Mail 2009 as an IMAP client. This configuration will require your:

Username..... This is the same as your e-mail address (ex. example@pspinc.com)
Password..... The same password as your POP account
Incoming Server..... IMAP: imap.dreamersi.net
Outgoing Server (SMTP).. smtp.dreamersi.net

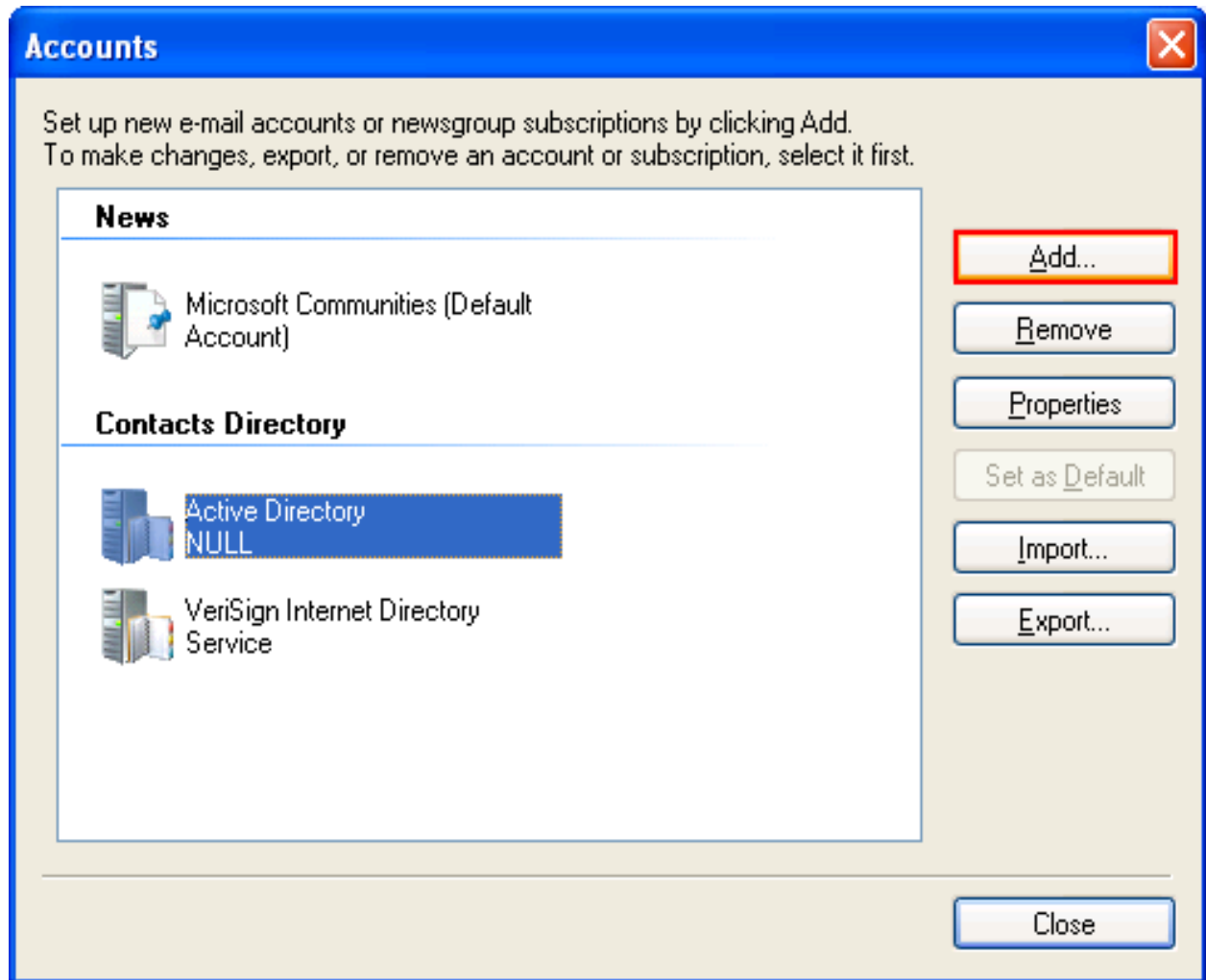
1. **Open up Windows Live Mail 2009. To make it easier to use, click on the icon on the top-right corner of the screen. Then click Show menu bar to show the menu bar.**



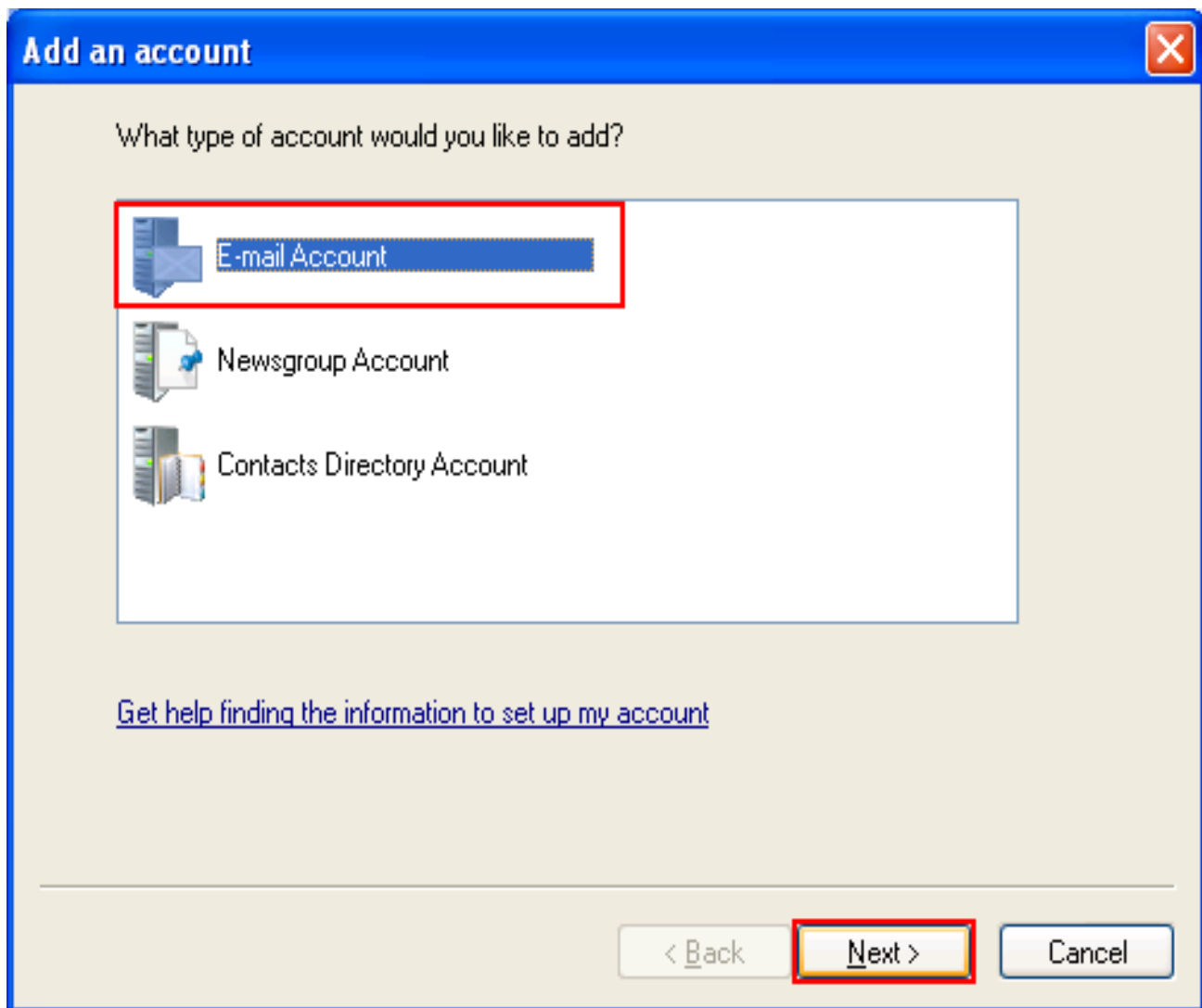
2. Click Tools from the menu bar → Accounts...



3. Click the Add button.



4. Make sure E-mail Account is selected then click Next.



5. **Enter the following information (This is just an example)**
When you are done, select Manually configure server settings for e-mail account. Then click Next.

E-mail Address..... john_doe@pspinc.com

Password..... The same password as your POP account

Display Name..... John Doe

Add an E-mail Account

Please enter your e-mail account information below:

E-mail address: john_doe@pspinc.com
example555@hotmail.com [Get a free e-mail account](#)

Password: ●●●●●●●●

Remember password

How should your name appear in e-mail sent from this account?

Display Name: John Doe
For example: John Smith

Manually configure server settings for e-mail account.

< Back Next > Cancel

6. **Enter the following information This is just an example)**
When you are done, select My outgoing server requires authentication.
Then click Next.

My incoming mail server... IMAP
Incoming server..... IMAP: imap.dreamersi.net (Port 993)
Login ID..... john_doe@pspinc.com
Outgoing server..... smtp.dreamersi.net (Port 465)

The screenshot shows a window titled "Add an E-mail Account" with a close button in the top right corner. Below the title bar, there is a link: "Where can I find my e-mail server information?". The window is divided into two sections: "Incoming Server Information" and "Outgoing Server Information".

Incoming Server Information

- My incoming mail server is a **IMAP** server.
- Incoming server: **imap.dreamersi.net** Port: **993**
- This server requires a secure connection (SSL)
- Log on using: **Clear text authentication**
- Login ID (if different from e-mail address): **john_doe@pspinc.com**

Outgoing Server Information

- Outgoing server: **smtp.dreamersi.net** Port: **465**
- This server requires a secure connection (SSL)
- My outgoing server requires authentication

At the bottom of the window, there are three buttons: "< Back", "Next >", and "Cancel".

7. You may select "Set this account as the default mail account" (optional)

then click Finish. You have successfully created a new IMAP account!

